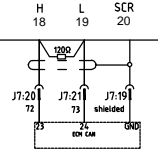
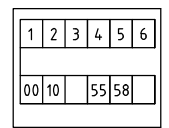


PLANT +VE

CAN

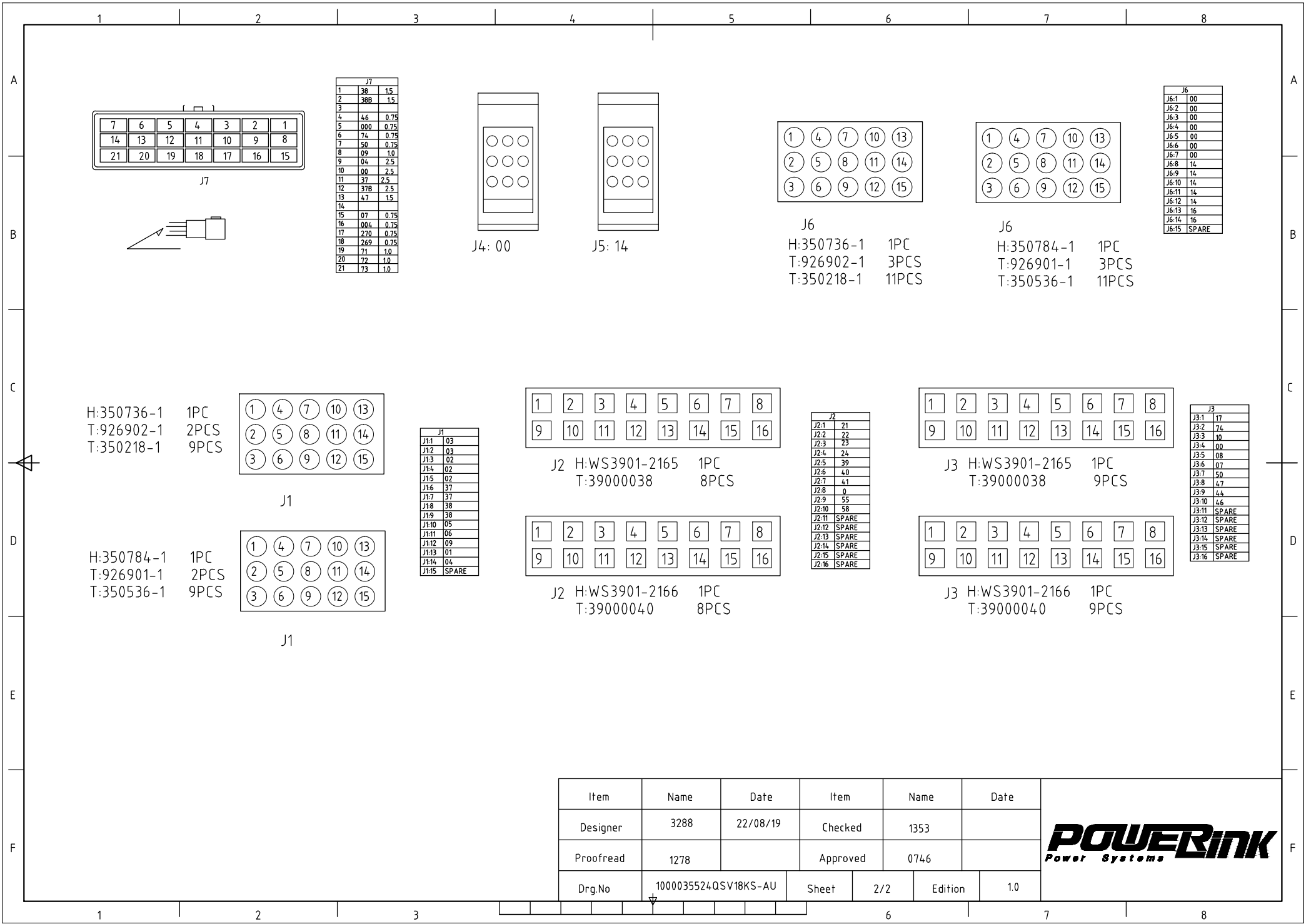


ECU			
ECU-22	04	ECU-19	00
ECU-21	38x	ECU-20 -	266
ECU-44	37x	ECU-2	265
		GND	
ECU-23	72	ECU-43 +	264
ECU-24	73	ECU-1	267
ECU-16	00	ECU-6	268
ECU-17	00	ECU-36 -	262
ECU-18	00	ECU-41 +	263



Apellation	The connecting diagram of PLC-920 controller for diesel Gen-set			Item	Name	Date	Item	Name	Date
GEN-SET MODEL: QSV18KS-AU	FUSE POWER TERMINAL LAMP CIRCUIT BREAKER PANEL LAMP SWITCH TO REMOTE START CONNECTOR TO ATS CONNECTOR TO ENGINE CONNECTOR	Designer	3288	22/08/19	Checked	1353			
ENGINE MODEL: D1803-M-DI-BG		Proofread	1278		Approved	0746			
CONTROLLER MODEL: PLC-920		Drg.No	1000035524QSV18KS-AU			Sheet	1/2	Edition	1.0
VOLTAGE: 415V/3P									
FREQUENCY: 50 Hz									
FULL LOAD CURRENT: 25A									





J7		
1	38	1.5
2	38B	1.5
3		
4	46	0.75
5	000	0.75
6	74	0.75
7	59	0.75
8	09	1.0
9	04	2.5
10	00	2.5
11	37	2.5
12	37B	2.5
13	47	1.5
14		
15	07	0.75
16	004	0.75
17	270	0.75
18	269	0.75
19	71	1.0
20	72	1.0
21	73	1.0

J6	
J6:1	00
J6:2	00
J6:3	00
J6:4	00
J6:5	00
J6:6	00
J6:7	00
J6:8	10
J6:9	14
J6:10	14
J6:11	14
J6:12	14
J6:13	16
J6:14	16
J6:15	SPARE

J1	
J1:1	03
J1:2	03
J1:3	02
J1:4	02
J1:5	02
J1:6	37
J1:7	37
J1:8	38
J1:9	38
J1:10	05
J1:11	06
J1:12	09
J1:13	01
J1:14	04
J1:15	SPARE

J2	
J2:1	21
J2:2	22
J2:3	23
J2:4	24
J2:5	39
J2:6	40
J2:7	41
J2:8	0
J2:9	55
J2:10	58
J2:11	SPARE
J2:12	SPARE
J2:13	SPARE
J2:14	SPARE
J2:15	SPARE
J2:16	SPARE

J3	
J3:1	17
J3:2	74
J3:3	10
J3:4	00
J3:5	08
J3:6	07
J3:7	50
J3:8	47
J3:9	44
J3:10	46
J3:11	SPARE
J3:12	SPARE
J3:13	SPARE
J3:14	SPARE
J3:15	SPARE
J3:16	SPARE

Item	Name	Date	Item	Name	Date
Designer	3288	22/08/19	Checked	1353	
Proofread	1278		Approved	0746	
Drg.No	1000035524QSV18KS-AU		Sheet	2/2	Edition 1.0

