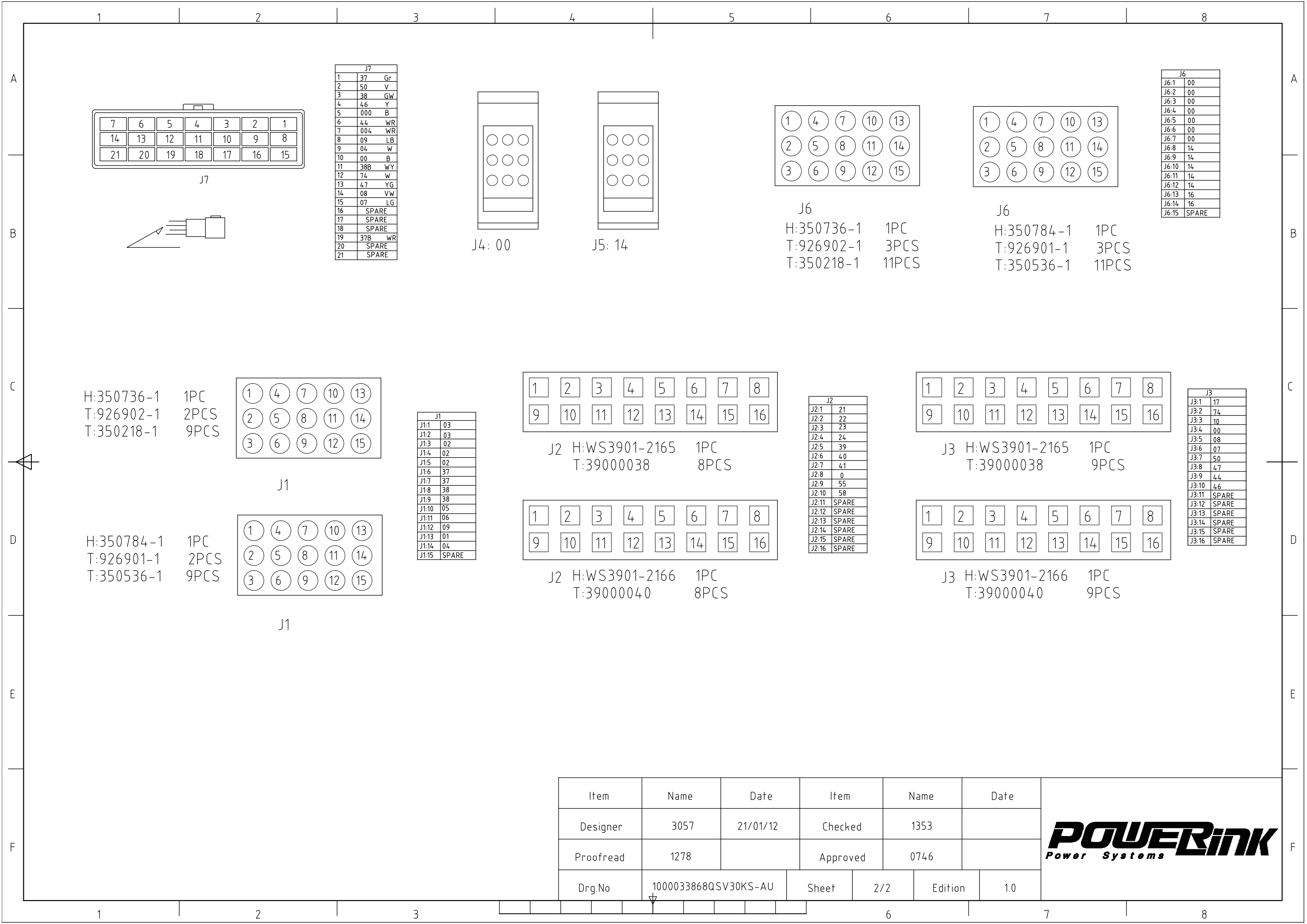


Apellation	The connecting diagram of PLC-920 controller for diesel Gen-set			Item	Name	Date	Item	Name	Date
GEN-SET MODEL : QSV30KS-AU ENGINE MODEL : V3300-BG CONTROLLER MODEL : PLC-920 VOLTAGE : 415V/3P FREQUENCY : 50 Hz MOTOR RPM : 1500rpm FULL LOAD CURRENT : 42A	FUSE POWER TERMINAL LAMP	CIRCUIT BREAKER PANEL LAMP SWITCH	TO REMOTE START CONNECTOR TO ATS CONNECTOR TO ENGINE CONNECTOR	Designer	3057	21/01/12	Checked	1353	
				Proofread	1278		Approved	0746	
				Drg.No	1000033868QSV30KS-AU			Sheet	1/2



F

F



J7		
1	37	Gr
2	50	V
3	38	GW
4	46	Y
5	000	B
6	44	WR
7	004	WR
8	09	LB
9	04	W
10	00	B
11	38B	WY
12	74	W
13	47	YG
14	08	VW
15	07	LG
16		SPARE
17		SPARE
18		SPARE
19	37B	WR
20		SPARE
21		SPARE

J6	
J6:1	00
J6:2	00
J6:3	00
J6:4	00
J6:5	00
J6:6	00
J6:7	00
J6:8	14
J6:9	14
J6:10	14
J6:11	14
J6:12	14
J6:13	16
J6:14	16
J6:15	SPARE

J1	
J1:1	03
J1:2	03
J1:3	02
J1:4	02
J1:5	02
J1:6	37
J1:7	37
J1:8	38
J1:9	38
J1:10	05
J1:11	06
J1:12	09
J1:13	01
J1:14	04
J1:15	SPARE

J2	
J2:1	21
J2:2	22
J2:3	23
J2:4	24
J2:5	39
J2:6	40
J2:7	41
J2:8	0
J2:9	55
J2:10	58
J2:11	SPARE
J2:12	SPARE
J2:13	SPARE
J2:14	SPARE
J2:15	SPARE
J2:16	SPARE

J3	
J3:1	17
J3:2	74
J3:3	10
J3:4	00
J3:5	08
J3:6	07
J3:7	50
J3:8	47
J3:9	44
J3:10	46
J3:11	SPARE
J3:12	SPARE
J3:13	SPARE
J3:14	SPARE
J3:15	SPARE
J3:16	SPARE

Item	Name	Date	Item	Name	Date
Designer	3057	21/01/12	Checked	1353	
Proofread	1278		Approved	0746	
Drg.No	1000033868QSV30KS-AU		Sheet	2/2	Edition 1.0

